

EASE SOFA

DESIGN BY JENS FAGER & ANDREAS ENGESVIK



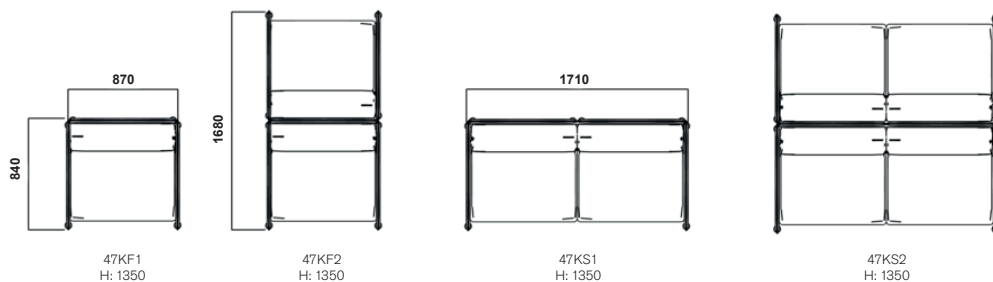
Ease is a product family providing everything from standing and hanging room dividers to workplaces, interview rooms, seating areas and suspended ceilings. Attractive accessories such as clothing hooks and shelves make it easy to create interesting environments. Ease is manufactured from a material normally used for sound absorption in the vehicle industry and is perfect for environments where you need to reduce noise levels. The material consists of recycled PET bottles.



CONFIGURATION



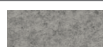
Designer Jens Fager



COLOURS & MATERIALS

FABRIC

Feldt



Divina MD



Blazer lite



Divina Melange



Each fabric type is available in multiple colours, see my.edsbyn or the product catalog.



Designer
Andreas Engesvik