

Monteringsanvisning - Assembly instruction

Hyllplan
Shelves



AB Edsbyverken, Box 300, SE-828 25 Edsbyn
Tel/Phone +46 (0)271-27500, Fax +46 (0)271-27501
www.edsbyn.com

Date:
2008-09-02

Nr:
00530062

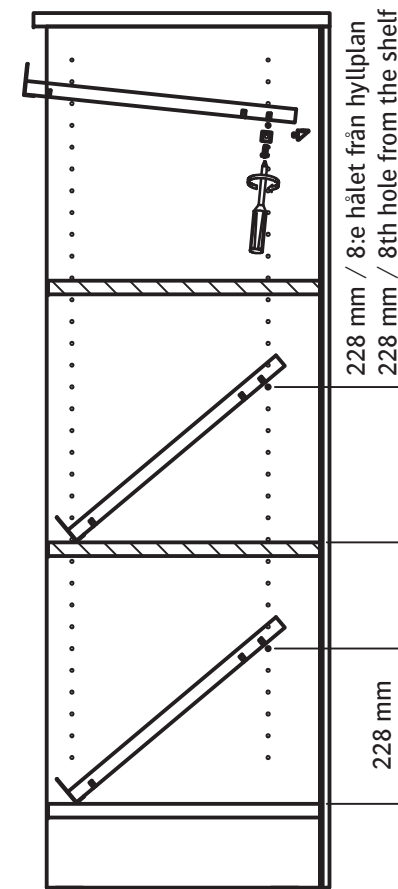
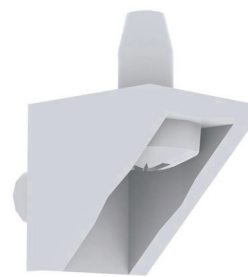
1

Hyllplan/shelf



1

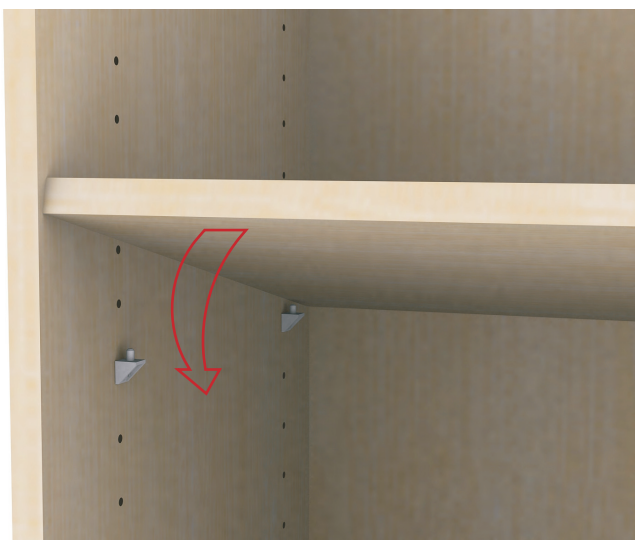
Tidskriftshylla 795/magazine shelf 795



Hyllbärare placeras i 8:e hålet från hyllplan eller 228 mm och skruvas därefter fast i hyllplanet / tidskriftshyllan. Framkant på tidskriftshylla vilar därmed på underliggande hyllplan.

Place the shelf rest in the 8th hole from the shelf or 228 mm and screw in the screw in the shelf / magazine shelf. The front edge of the magazine shelf rests on the underlying shelf.

2



2

