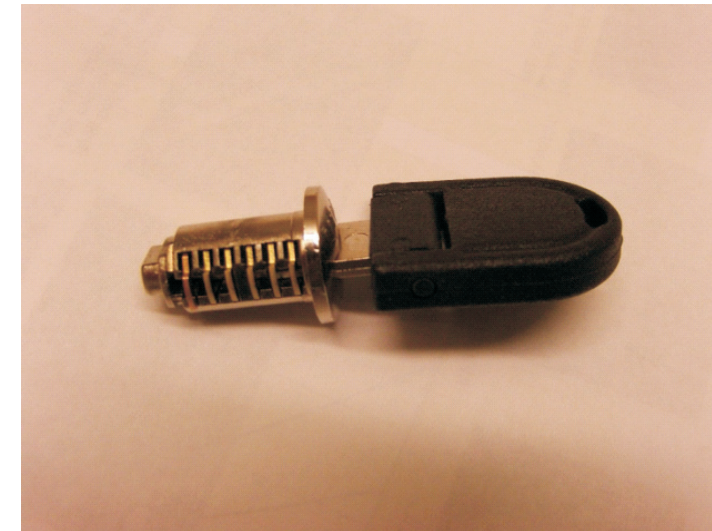


# Assembly instruction

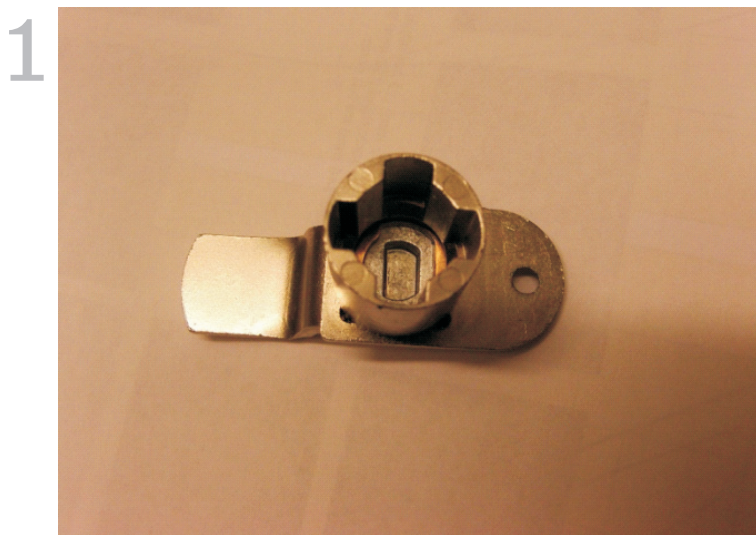
## Locking for storages



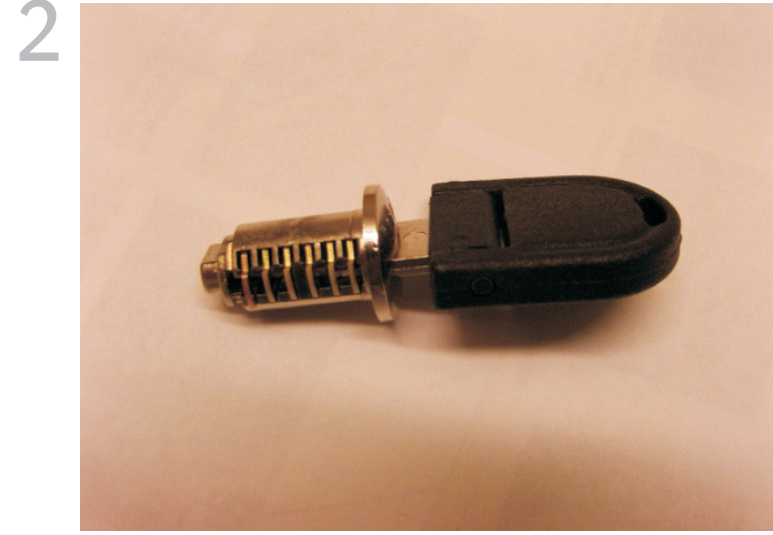
AB Edsbyverken, Box 300, SE-828 25 Edsbyn  
Tel/Phone +46 (0)271-27500, Fax +46 (0)271-27501  
[www.edsbyn.com](http://www.edsbyn.com)

Date:  
2009-06-09

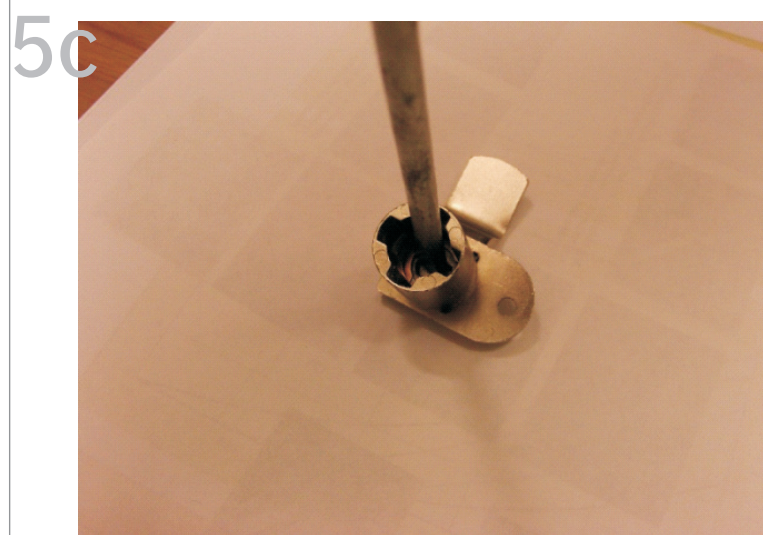
Nr:



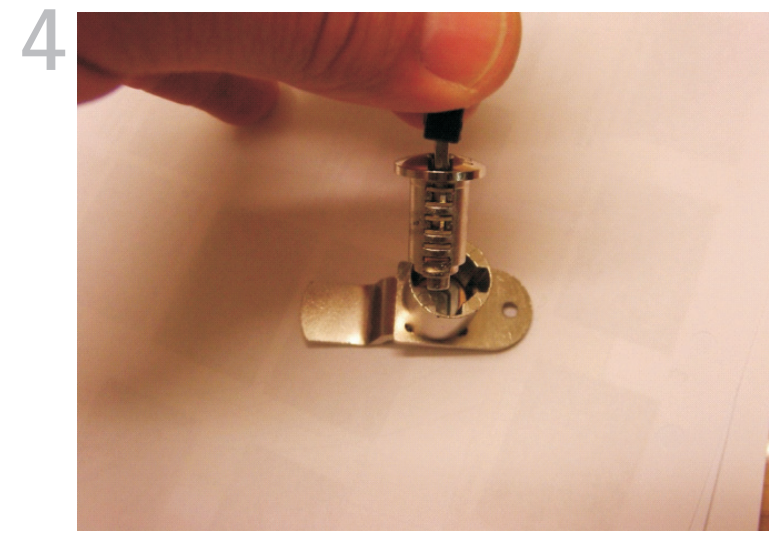
1 Irrespective of which type of locking device the mounting of the cylinder will be the same. Note the hollow in the bottom of the locking device.



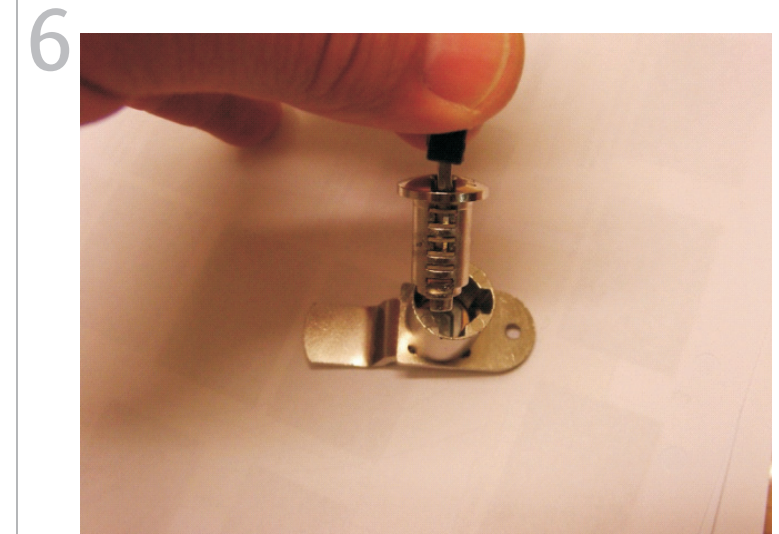
2 The cylinder and key is the same for all types of lock.



3 The hollow in the locking device has the same shape as the top of the cylinder, see picture. The cylinder has to be turned right to fit into the locking device.



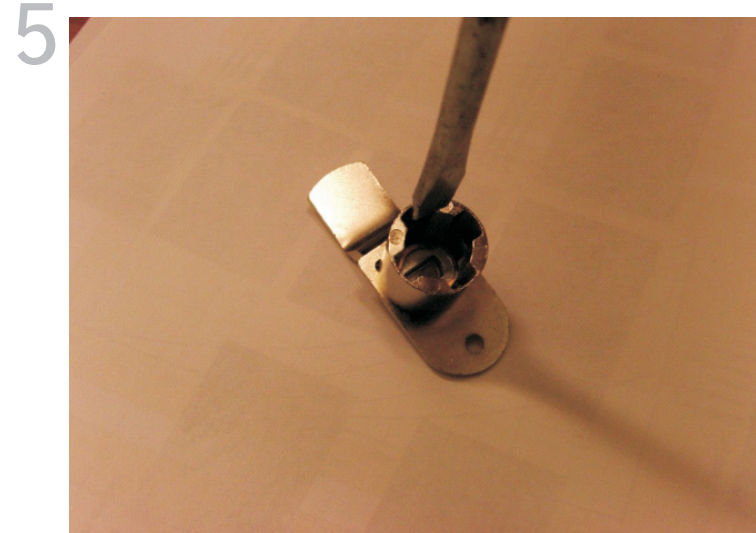
4 The locking device and the cylinder can only be mounted in one position. The key has to be placed in the cylinder during the mounting.



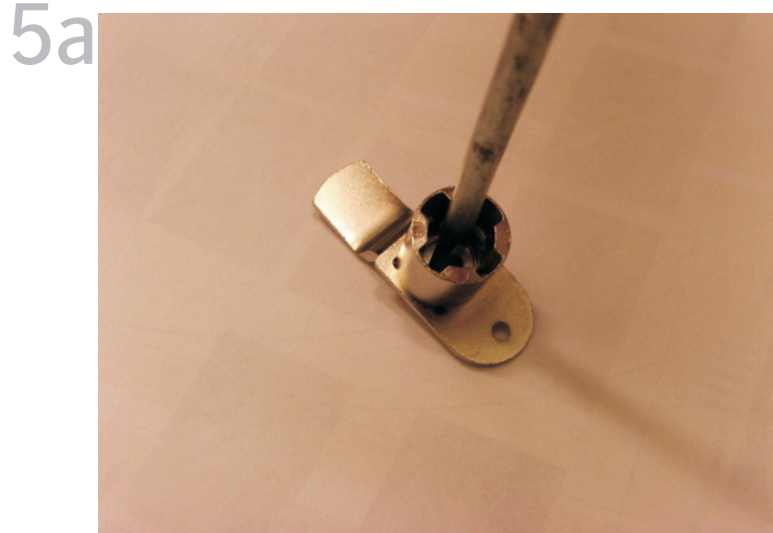
6 Try to mount the cylinder. Note that it is turned the right way to the hollow in the locking device.



7 When the lock is mounted it is not able to disassemble in any other way than using a special dismounting key.



5 If it is not able to mount the cylinder and locking device the lock has to be turned 90 to 180 degrees (it depends on the type of the lock) Use a screwdriver into the hollow in the locking device.



5a Turn the screw driver to the right or to the left until it is stop.