

Monteringsanvisning - Assembly instruction

EASE golvskärm
EASE floor screens



AB Edsbyverken, Box 300, SE-828 25 Edsbyn
Tel/Phone +46 (0)271-27500, Fax +46 (0)271-27501
www.edsbyn.com

Date:

2015-03-06

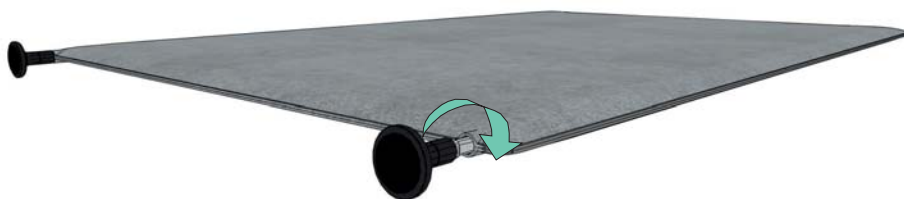
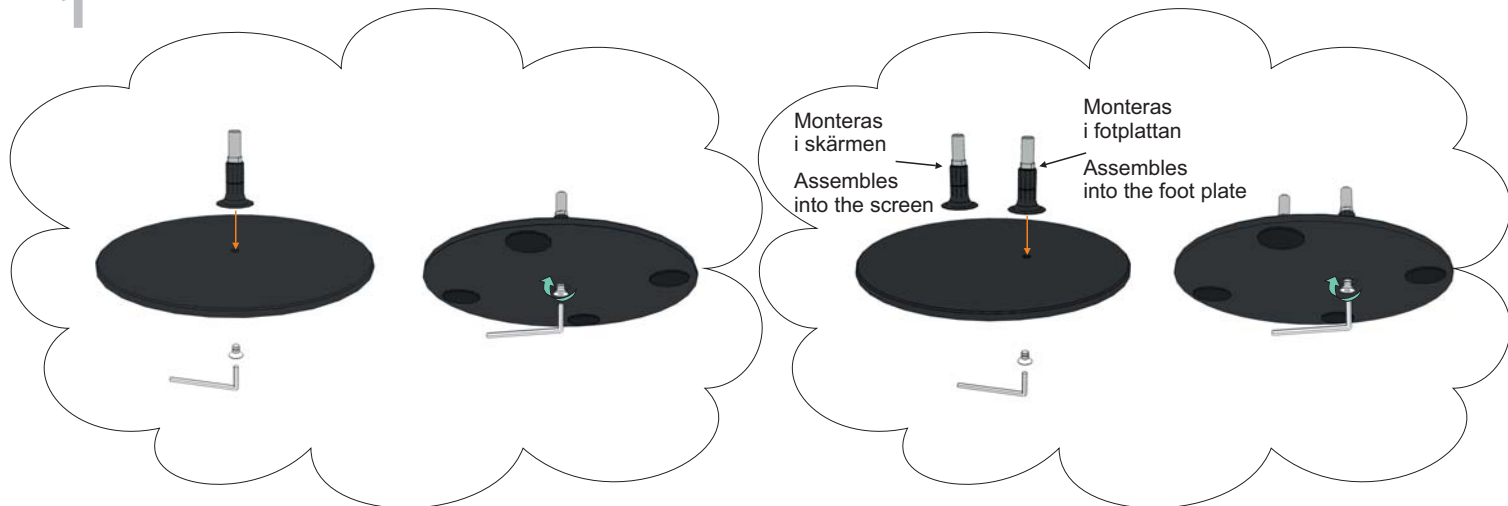
Nr:

00530241-B

Avslutningsfot / End-foot

Kopplingsfot / Foot for connection

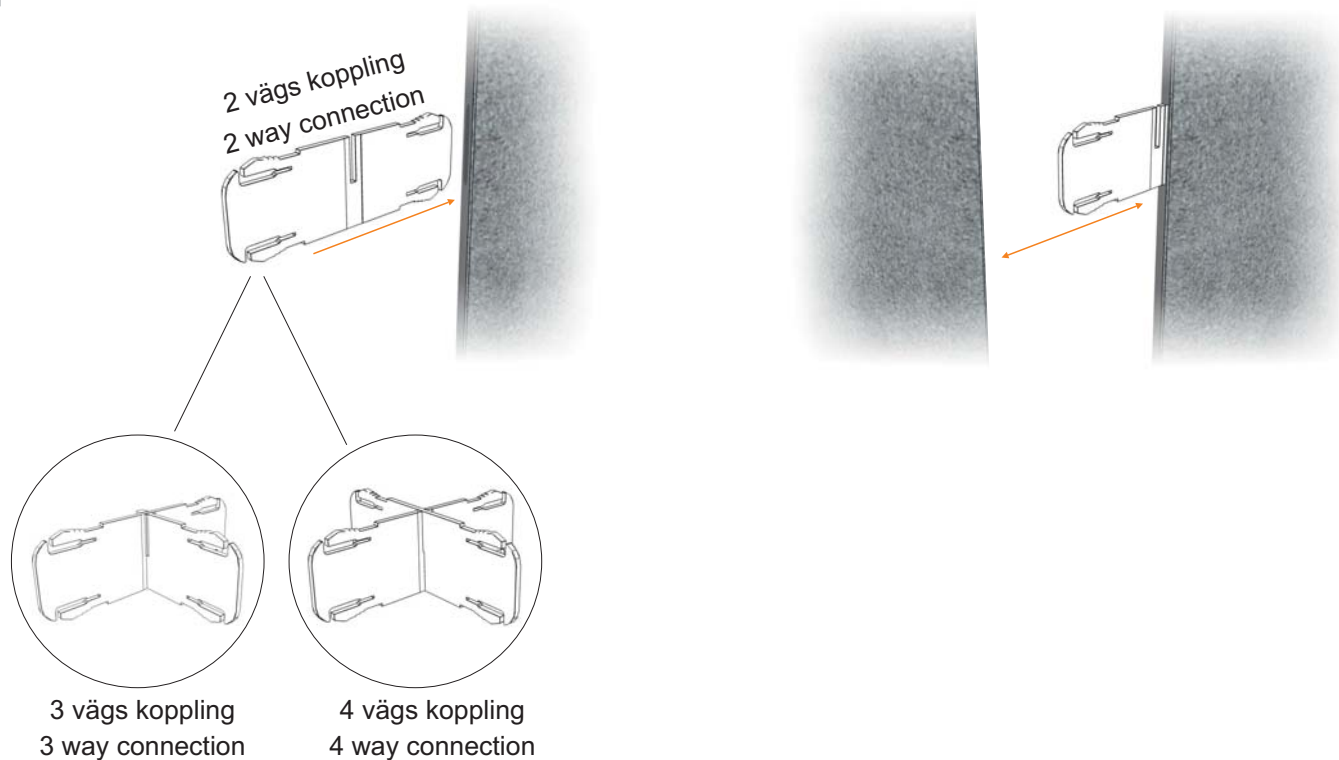
1



Montera ihop eventuella kopplings-/avslutningsfötter, till kopplingsfoten monteras en fot i fotplattan och en fot skruvas fast i skärmen. Avsluta med att skruva fast övriga fötter i skärmen.

Assemble possible connection-/end foot, to the foot for connection; screw one foot in the foot plate and one foot in the screen. Finish by screwing the rest of feet into the screen.

2



För in kopplingsbeslaget med slits uppåt enligt bild i skärmen tills den bottenar i skärmen.

Insert the connection fittings with the slot up as shown in the screen until it reaches the bottom of the screen.

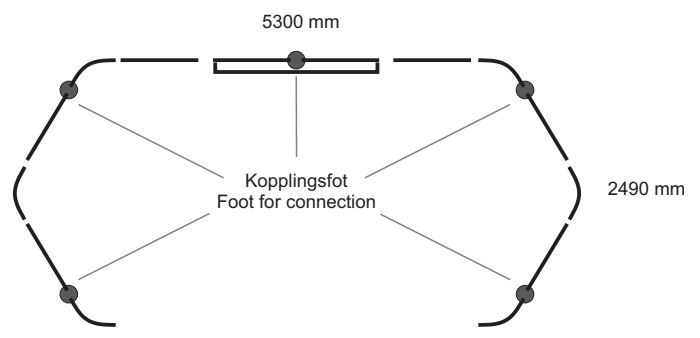
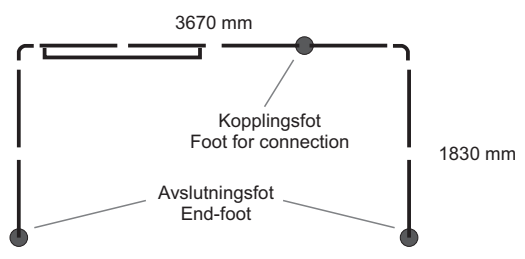
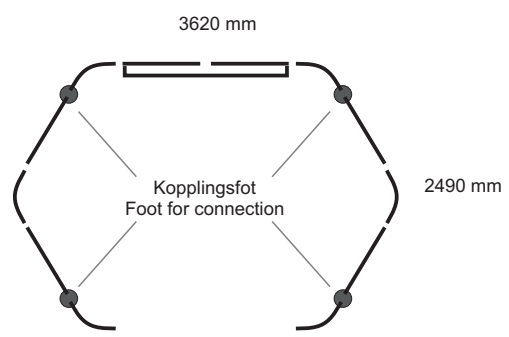
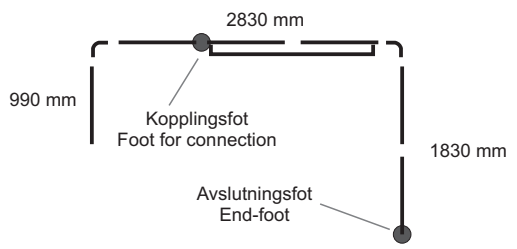
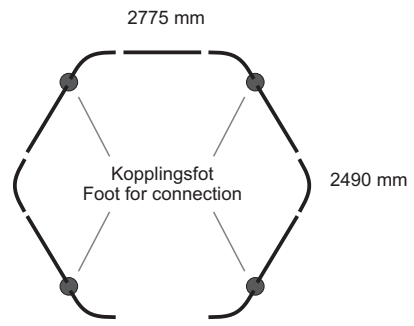
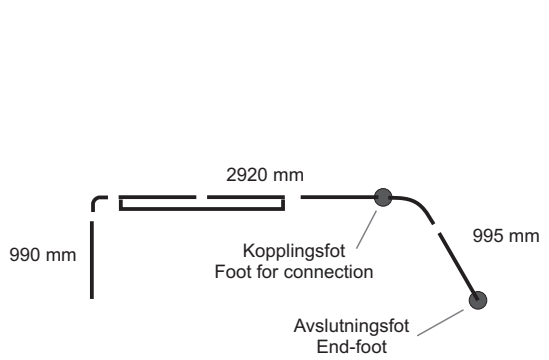
Där inte annat anges används singelfötter
 Unless otherwise specified, use the single-foot



Singelfot
Single-foot

Kopplingsfot
Foot for connection

Avslutningstot
End-foot



Där inte annat anges används singelfötter
 Unless otherwise specified, use the single-foot



Singelfot
Single-foot

Kopplingsfot
Foot for connection

Avslutningstot
End-foot

