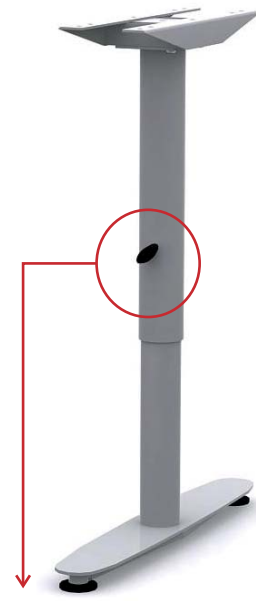
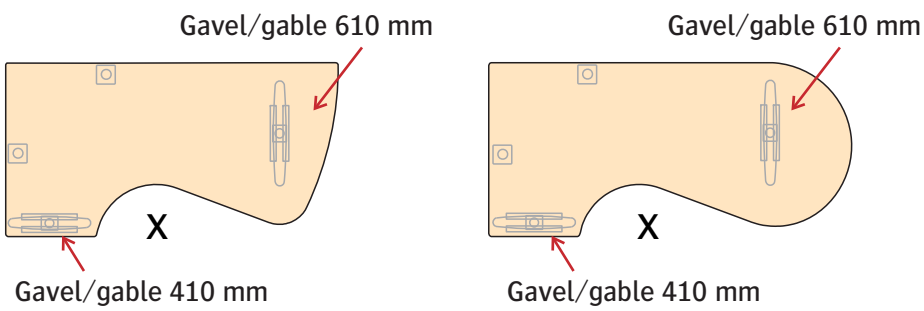
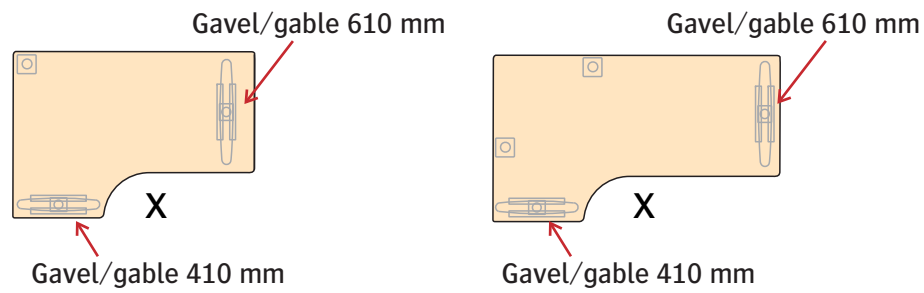
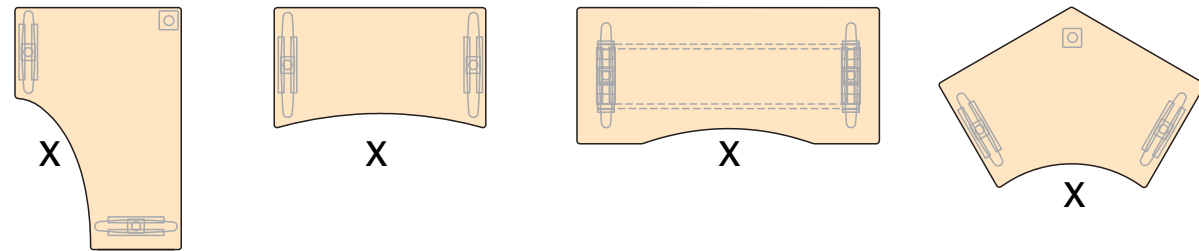
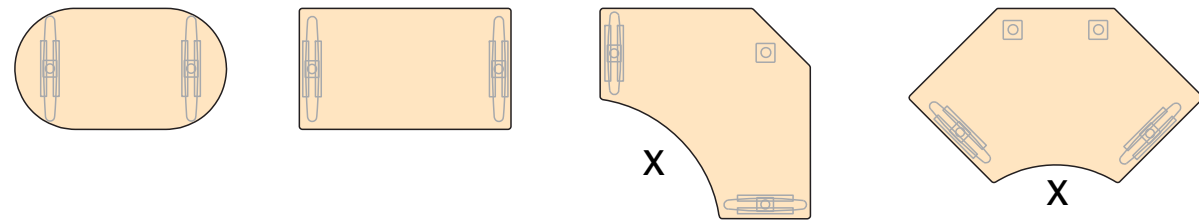


Monteringsanvisning - Assembly instruction

Connect fristående bord
Connect freestanding table



X = montera vredet för höjjustering mot denna sida.

Lossa vredet för att justera bordet till en bekväm arbetshöjd, läs sedan vredet.

X = assemble the knob for height adjustment into this side.

Loosen the knob and adjust the table to a comfortable height, then lock knob.

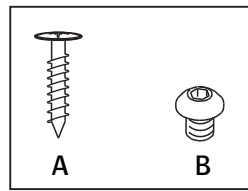


AB Edsbyverken, Box 300, SE-828 25 Edsbyn
Tel/Phone +46 (0)271-27500, Fax +46 (0)271-27501
www.edsbyn.com

Date: 2013-09-11

Nr: 00530134-B

1



2

Montera stöbben (där stöbben medföljer) i de förborrade hålen med skruv A (4 skruvar per stöbben).

Assemble supporting legs (when it is enclosed) in the predrilled holes with screw A (4 screws per supporting leg).



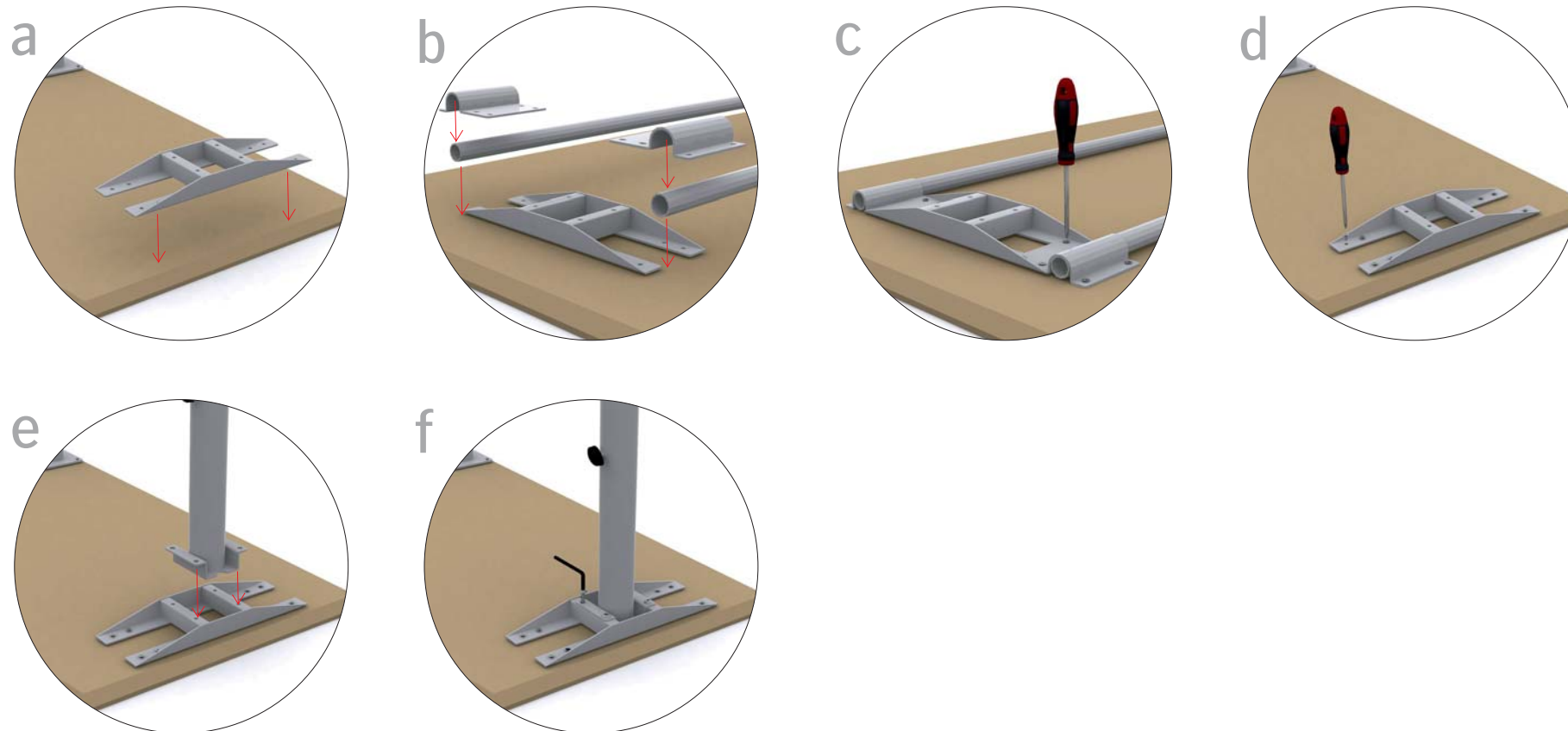
3

a Montera skivfästen i de förborrade hålen med skruv A (10 skruvar per skivfäste).

För bord utan sargrör - fortsätt på bild D.

b-c I de fall sargrör medföljer monteras skivfäste och sargrörsfäste med 14 st skruv A.

d-f Montera gavlarna med skruv B (4 skruvar per gavel).

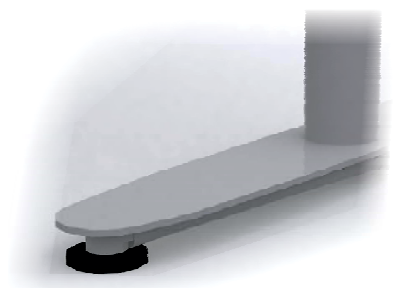


a Assemble the table holds in the predrilled holes with screw A (10 screws per gable).

Table without frame pipes - continue on picture D.

b-c In the case frame pipes is supplied, assemble these with the table holds with screw A (14 screws).

d-f Assemble the gables with screw B (4 screws per gable).



Vid behov.
Justera ställfötterna. Max 10 mm.

At need.
Adjust the adjustable feet. Maximum 10 mm.