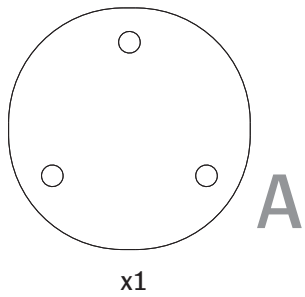


Monteringsanvisning - Assembly instruction

Pelarfot med kabelgenomföring
Column stand with cable inlet



| | |
|--|---------------------|
|  AB Edsbyverken, Box 300, SE-828 25 Edsbyn Tel/Phone +46 (0)271-27500, Fax +46 (0)271-27501 www.edsbyn.com | Date: 2016-02-29 |
| | Nr: 00530195-A |

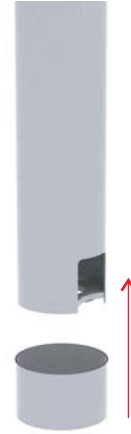


1



Denna sida ned.
This side down.

2



Placera täckringen runt röret.
Place the cover ring around the pipe.

4

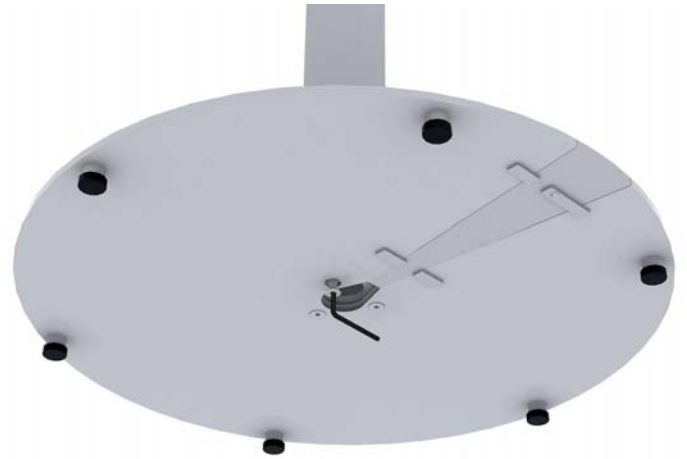


Placera sedan skivfästet på röret.
Place the tabletop hold on the pipe.



Montera skivfästet med brickan (A) samt tre skruvar (B).
Assemble the tabletop hold with the bracket (A) and three screws (B).

3



Placera röret på foten, montera med de tre medföljande skruvarna (C).
Place the pipe on the foot, assemble with the enclosed three screws (C).



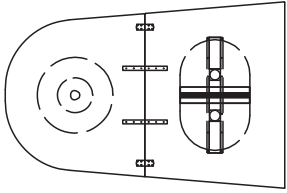
Ta bort luckan med en insexnyckel för att enkelt dra sladden under foten.
Remove the door with an allen key for easy wiring under the foot.



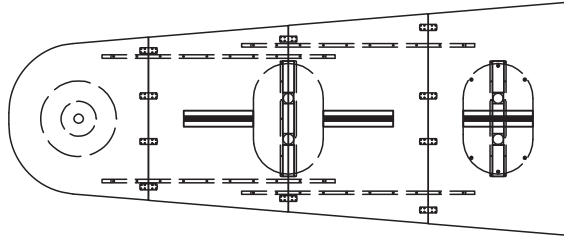
Skruva sedan fast skruven igen.
Fasten the screw again.



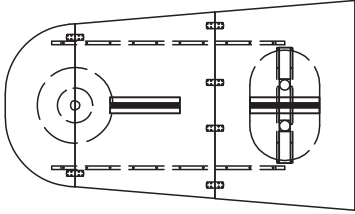
Täck sedan hålet med täckringen.
Cover the hole with the cover ring.



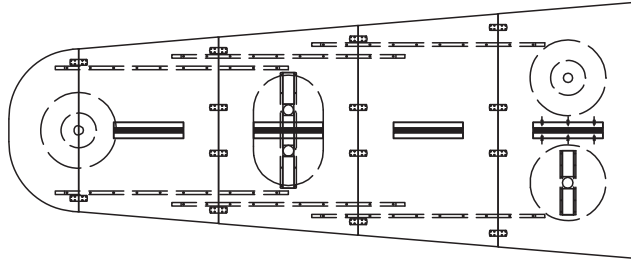
Komb 01



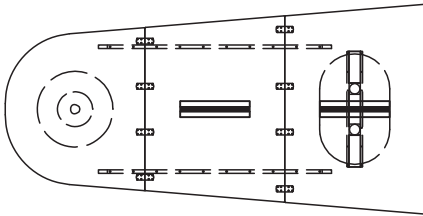
Komb 05



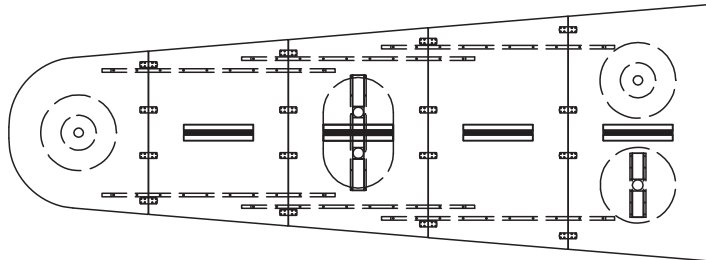
Komb 02



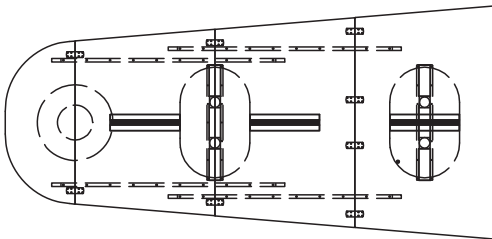
Komb 06



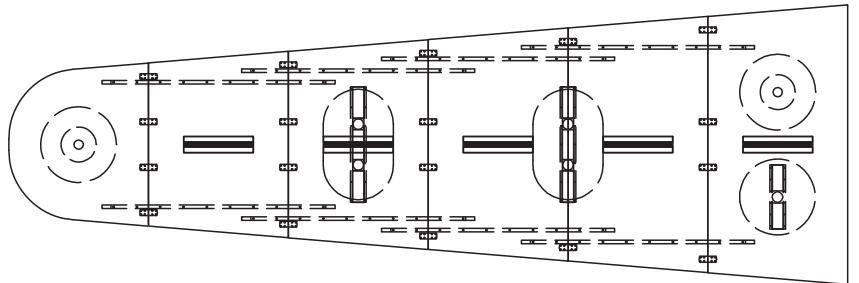
Komb 03



Komb 07



Komb 04



Komb 08