

# Monteringsanvisning - Assembly instruction

Continental  
I-desk & T-desk



AB Edsbyverken, Box 300, SE-828 25 Edsbyn  
Tel/Phone +46 (0)271-27500, Fax +46 (0)271-27501  
[www.edsbyn.com](http://www.edsbyn.com)

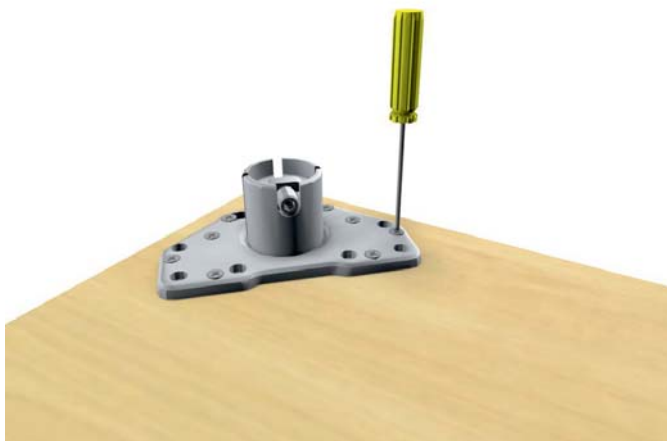
Date:

2015-09-21

Nr:

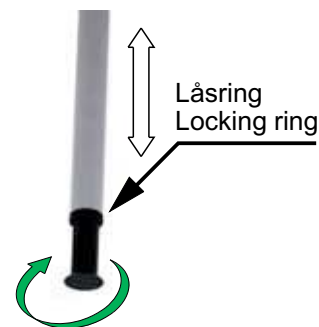
00530247-B

## I-desk



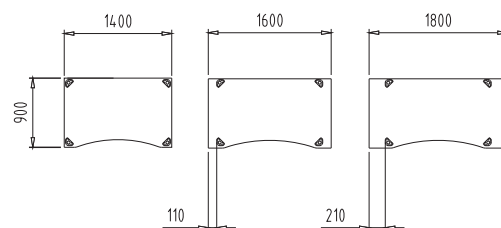
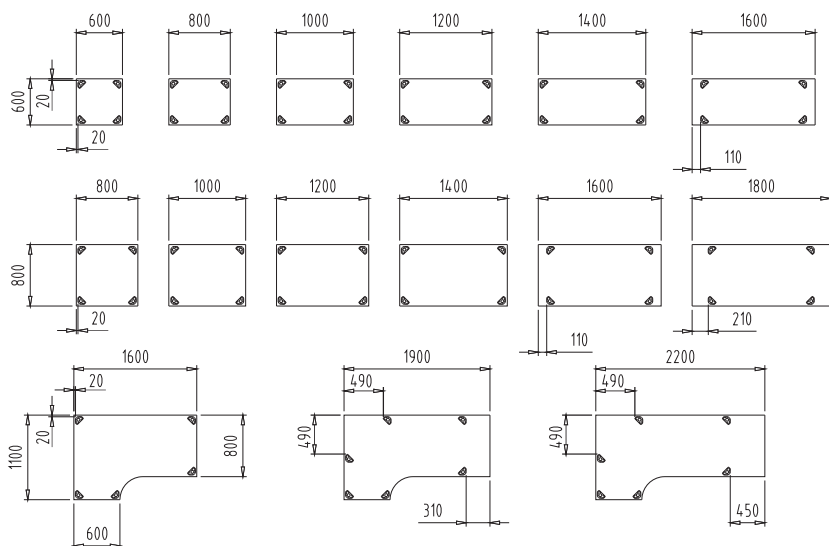
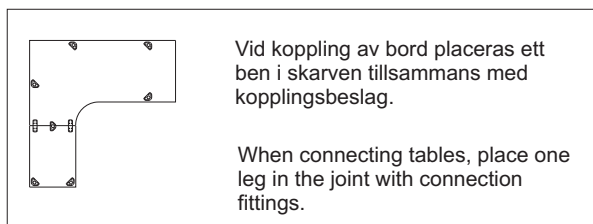
Montera skivfästet på bordsskivan (ej förborrade hål). Se placering nedan.  
Skjut ned bordsbenet i skivfästet. Dra fast bordsbenet med sexkantsnyckel.

Assemble the table hold on the table top (not pre-drilled holes). See placement below.  
Push the leg down in the table hold. Screw the leg with the allen key.

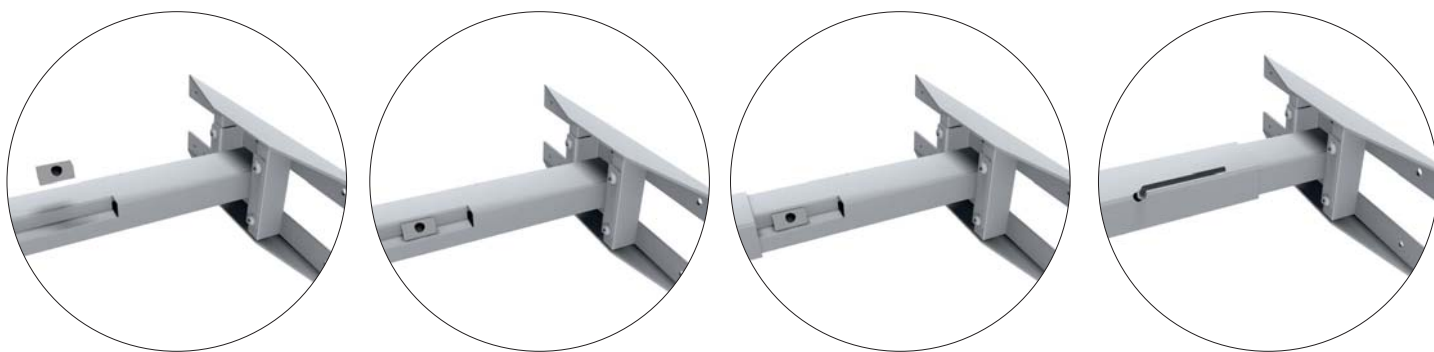


Lossa låsringen och justera bordet till en bekväm arbetshöjd.

Loosen the locking ring and adjust the table to a comfortable height.



1



Lägg låsningen (för höjdjustering) i spåret, trä på benet och skruva fast med insexnyckel.

Put the lock (for height adjustment) in the groove, push the leg and screw with the allen key.

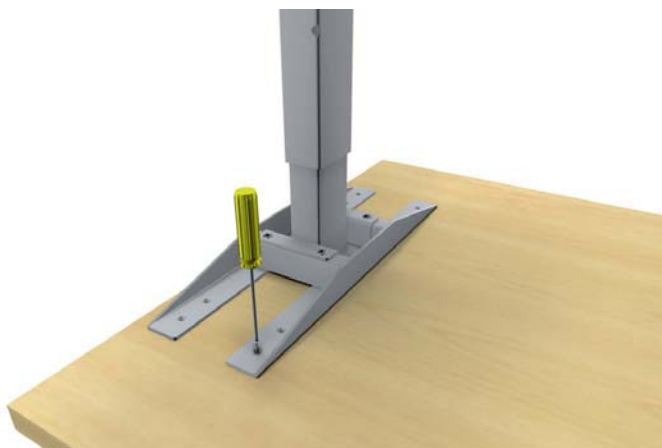
2



Skruva fast foten (4 skruvar) med insexnyckel.  
Montera därefter ställfötterna.

Screw the foot (4 screws) with the allen key.  
Then assemble the adjustable feet.

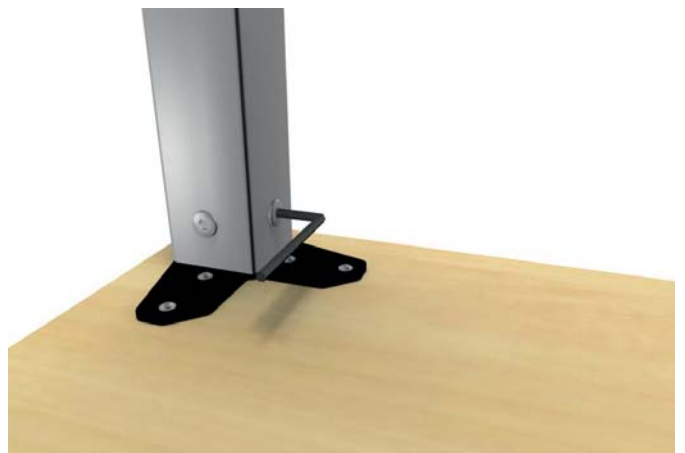
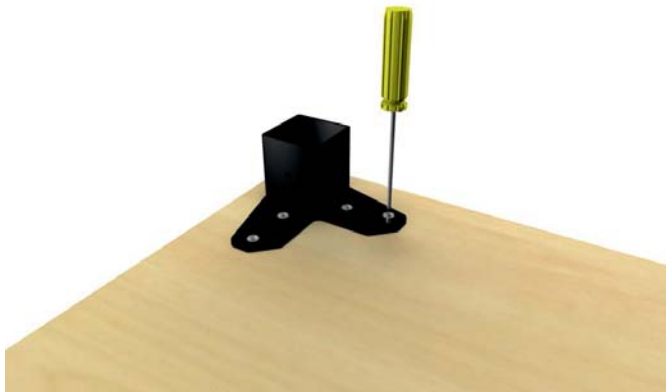
3



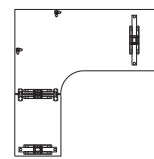
Montera stativet på bordsskivan med 8 skruvar.  
Se placering på nästa sida.

Assemble the stand on the table top with 8 screws.  
See placement on next side.

## 4



Assemble the table hold on the table top (not pre-drilled holes).  
Push the leg down in the table hold. Screw the leg with the allen key.



When connecting tables, place one leg in the joint with connection fittings.

