

Monteringsanvisning - Assembly instruction

Neat



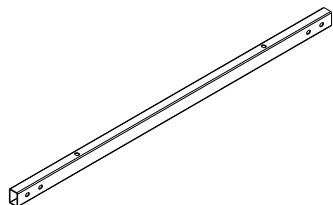
AB Edsbyverken, Box 300, SE-828 25 Edsbyn
Tel/Phone +46 (0)271-27500, Fax +46 (0)271-27501
www.edsbyn.com

Date:

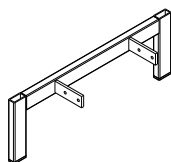
2016-01-15

Nr:

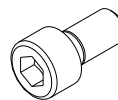
00530223-E



A (2x)



B (2x)



C (12 alt. 14x)

1



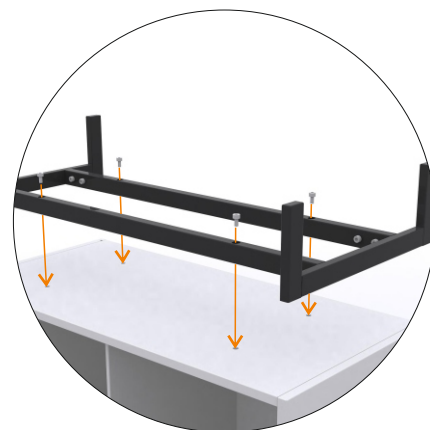
2



Montera gavlarna i sargerna med skruv C.
Se även punkt 5

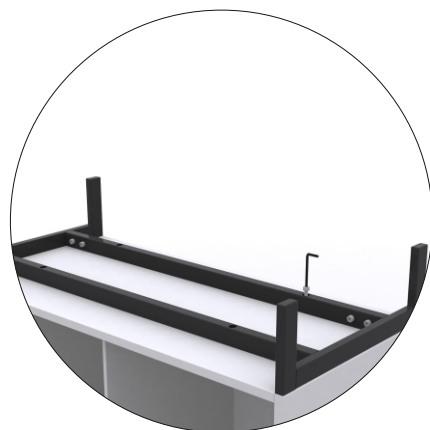
Assemble the gables in the frames with screw C.
See also point 5

3a



Vänd skåpstommen upp och ned och skruva fast benstativet med skruv C
Turn the cabinet upside down and assemble the base with screw C

3b



3c

På skåp med bredd 1600 mm monteras även en extra sarg med 2 skruv C, samt en träskruv.

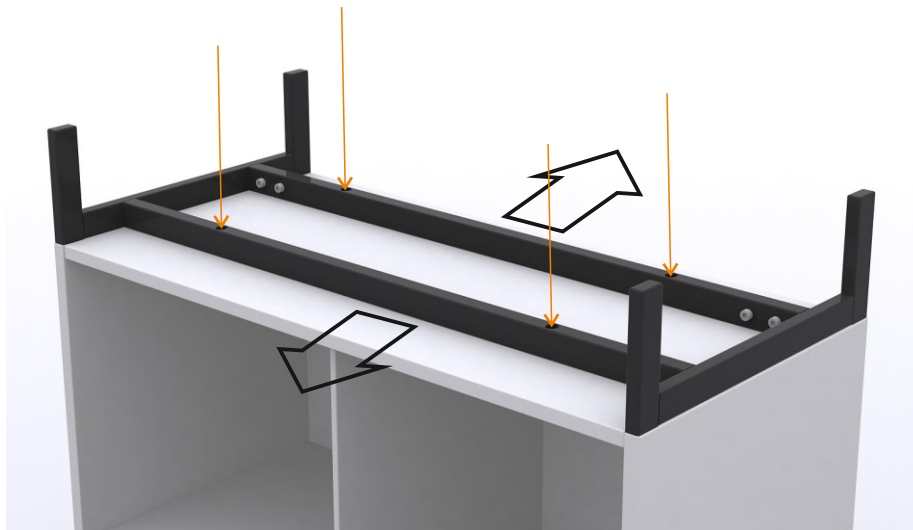
At cabinet with width 1600 mm, also assemble an extra beam with 2 screw C and one wooden screw.





Genom att lossa skruvar (4 skruvar per gavel) kan gavlarna justeras i sidled. Stativet skall monteras centrerat, ca 0,5-1 mm indraget från sidorna. Använd vinkel för att få gavlarna vinkelräta.

By loosening the screws (4 screws gable) you can adjust the gables sideways. The base should be assembled centered, about 0.5-1 mm retracted from the sides. Use an angle to get gables perpendicular.



Genom att lossa skruvar (4-6 stycken) kan man justera stativet framåt alternativt bakåt. Stativet skall monteras centrerat, ca 1 mm från fram och bakkant.

By loosening the screws (4-6 screws), you can adjust it forward or backward. The base should be assembled centered, about 1 mm from the front and rear.